

Signify Classified - Internal
Cooper Lighting Solutions Photometric Lab
1121 Highway 74 South
Peachtree City, GA 30269



Scaled data based on original data using
LM-79-2019 Approved Method: Electrical and Photometric Measurements of Solid-
State Lighting Products

Test Report Prepared for

Cooper Lighting Solutions

Brand: McGRAW-EDISON

Report Number: P641947

Luminaire Tested: GWS-SA6B-830-U-SLL-W

Issue Date: 1/10/2023

Test Information

Test Method: LM-79-2019
Report Number: P641947
TEST IS SCALED FROM IESNA LM-79-08 TEST DATA (G2-2209-782-37)
Test Lab: COOPER LIGHTING SOLUTIONS
Issue Date: 1/10/2023
Manufacturer: COOPER LIGHTING SOLUTIONS
Product Line: McGRAW-EDISON
Catalog Number: GWS-SA6B-830-U-SLL-W
Description: GALLEON WALL SLIM LUMINAIRE. (6) LIGHTSQUARES WITH 16 LEDS EACH AND SPILL LIGHT ELIMINATOR LEFT OPTICS
Light Source: (96) 3000K CCT, 80 CRI LEDS
Ballast/Driver: -

Summary

Lumens per Lamp: N/A
Luminaire Lumens: 15763.6 lumens
Efficiency: N/A
Efficacy: 113.5 lumens/watt
Luminous Opening: Rectangular (W 2' x L: 1' x H: 0')
IES Classification: Type III - Short
BUG Rating: B2 - U0 - G3

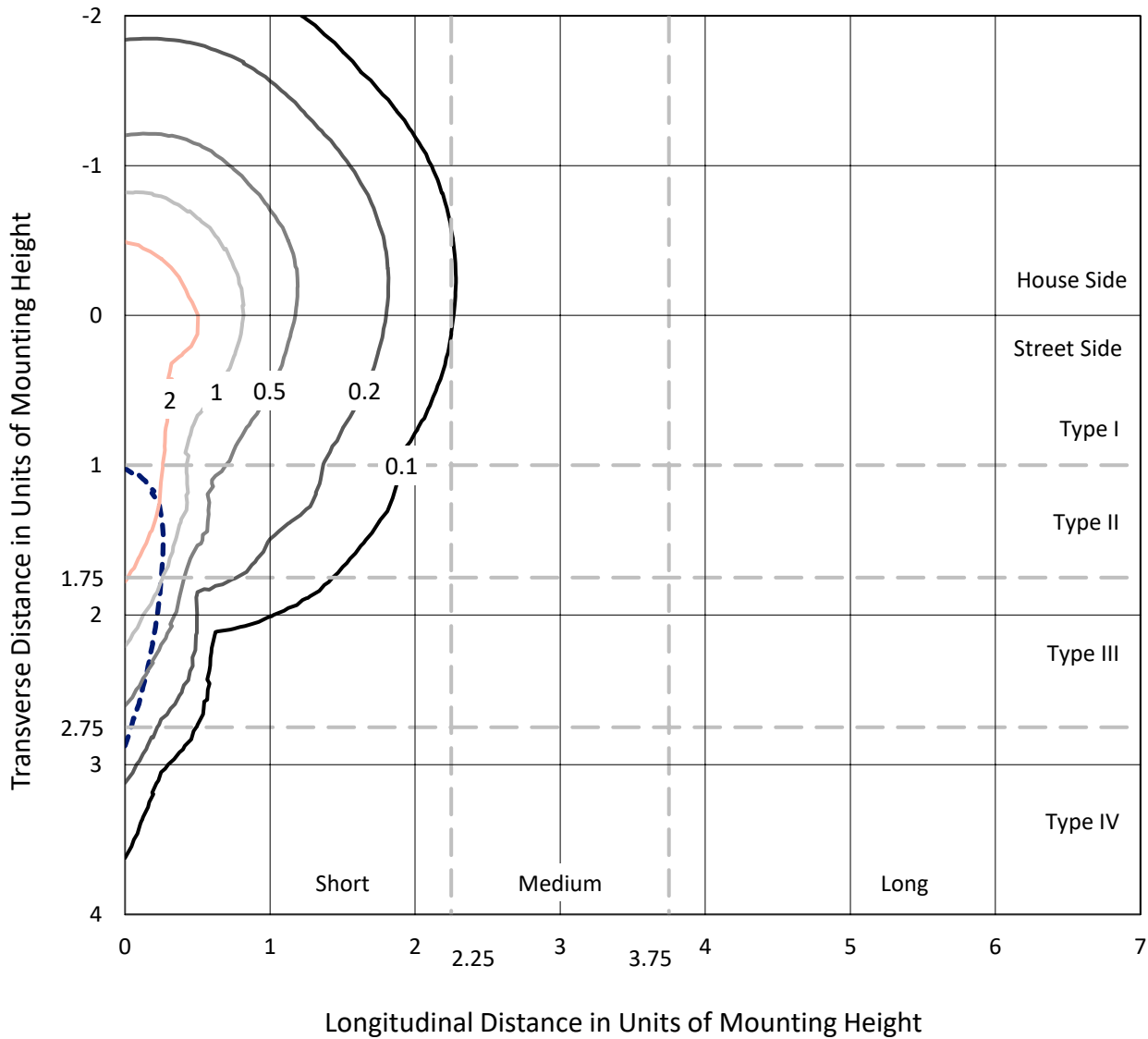
Input Watts (W): 138.9
Input Voltage (V): 120
Input Current (Ain): NR
Voltage Rise (V): NR
Power Factor: NR
Total Harmonic Distortion (THDi): NR
Frequency (hertz): 0
Stabilization Time: NR
Operation Time: NR
Ambient Temperature (°C): NR
Test Distance: 28.75 FT



REPORT NUMBER: P641947
 CATALOG NUMBER: GWS-SA6B-830-U-SLL-W

Iso-Footcandle Lines of Horizontal Illumination

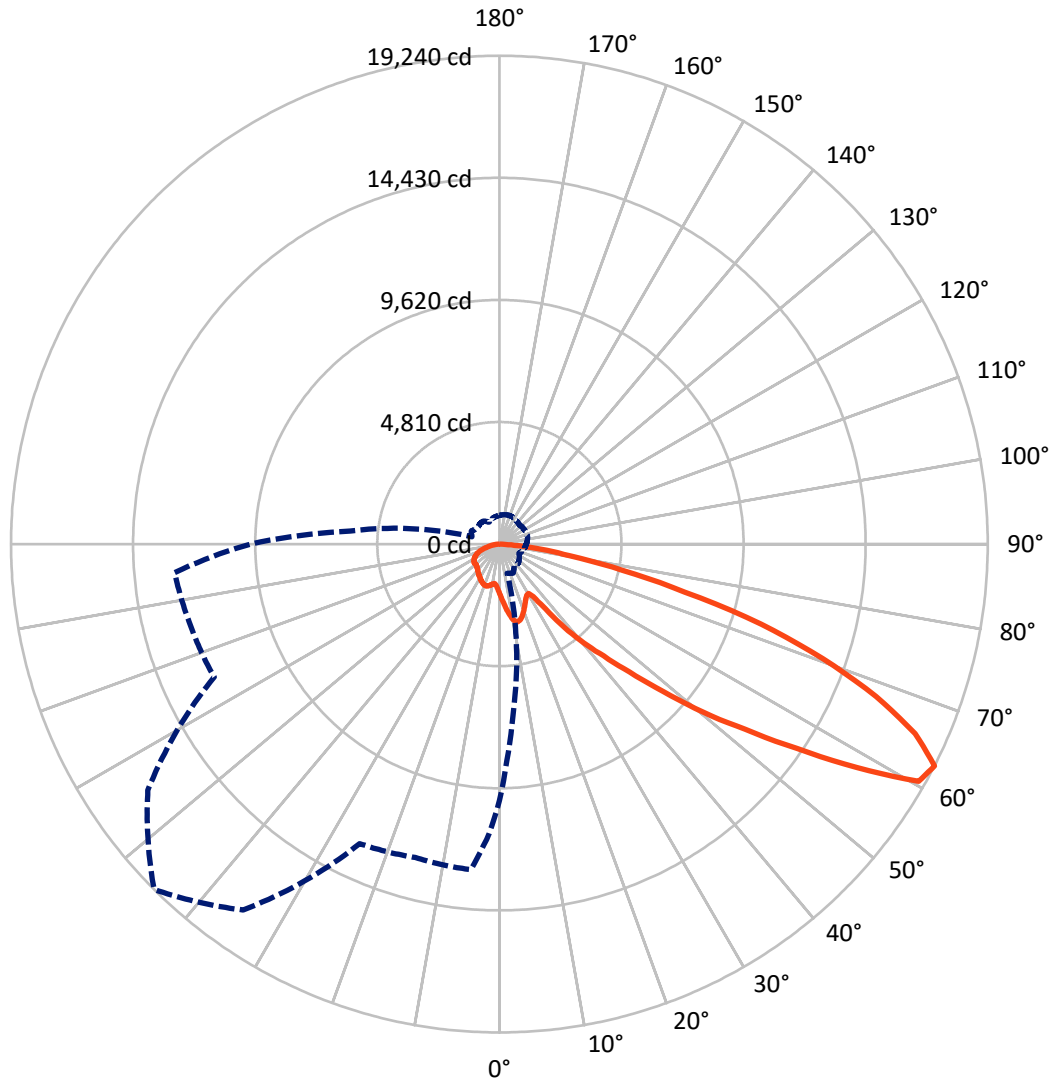
× Max cd
 - - - 1/2 Max cd



Based on 25 foot mounting height. Maximum calculated value = 4.2 fc
 Type III - Short - N/A

REPORT NUMBER: P641947
CATALOG NUMBER: GWS-SA6B-830-U-SLL-W

Luminous Intensity Polar Plot



— Vertical Plane Through 315-Deg Lateral - - - Horizontal Cone Through 62.5-Deg Vertical

REPORT NUMBER: P641947

CATALOG NUMBER: GWS-SA6B-830-U-SLL-W

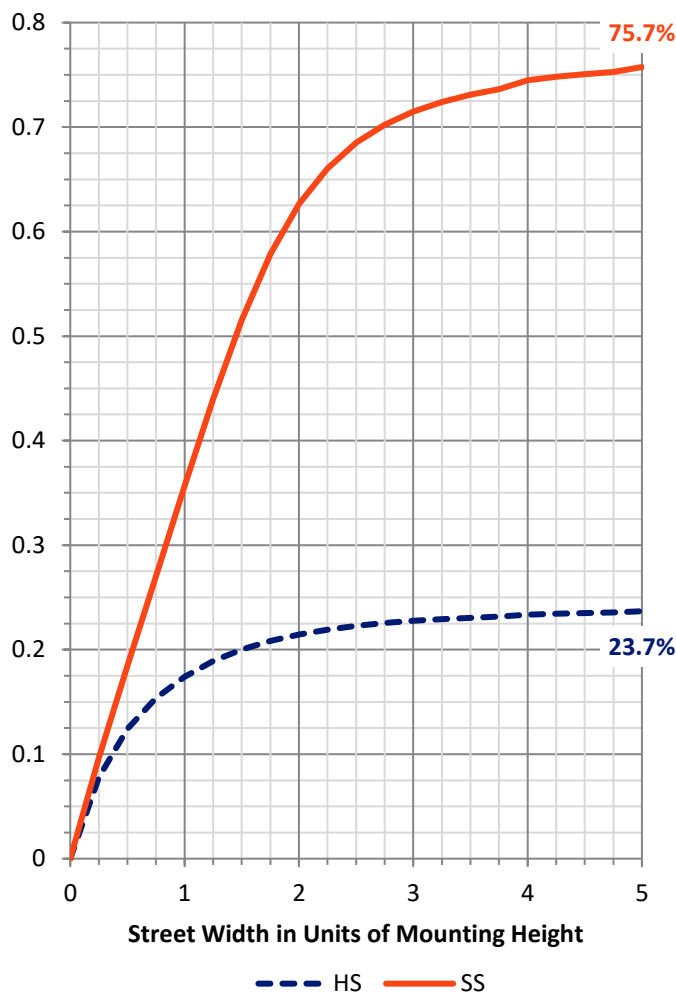
FLUX DISTRIBUTION:

		Downward	Upward	Total
House Side	Lumens	3769.1	0.0	3769.1
	% Fixture	23.9	0.0	23.9
Street Side	Lumens	11994.5	0.0	11994.5
	% Fixture	76.1	0.0	76.1
Total	Lumens	15763.6	0.0	15763.6
	% Fixture	100.0	0.0	100.0

ZONAL LUMENS:

Zone	Lumens	% Fixture
0°-10°	193.6	1.2
10°-20°	629.3	4.0
20°-30°	990.6	6.3
30°-40°	1357.8	8.6
40°-50°	2118.6	13.4
50°-60°	3652.9	23.2
60°-70°	4233.3	26.9
70°-80°	2234.5	14.2
80°-90°	353.0	2.2
90°-100°	0.0	0.0
100°-110°	0.0	0.0
110°-120°	0.0	0.0
120°-130°	0.0	0.0
130°-140°	0.0	0.0
140°-150°	0.0	0.0
150°-160°	0.0	0.0
160°-170°	0.0	0.0
170°-180°	0.0	0.0
0°-90°	15763.6	100.0
0°-180°	15763.6	100.0

Coefficient of Utilization



REPORT NUMBER: P641947

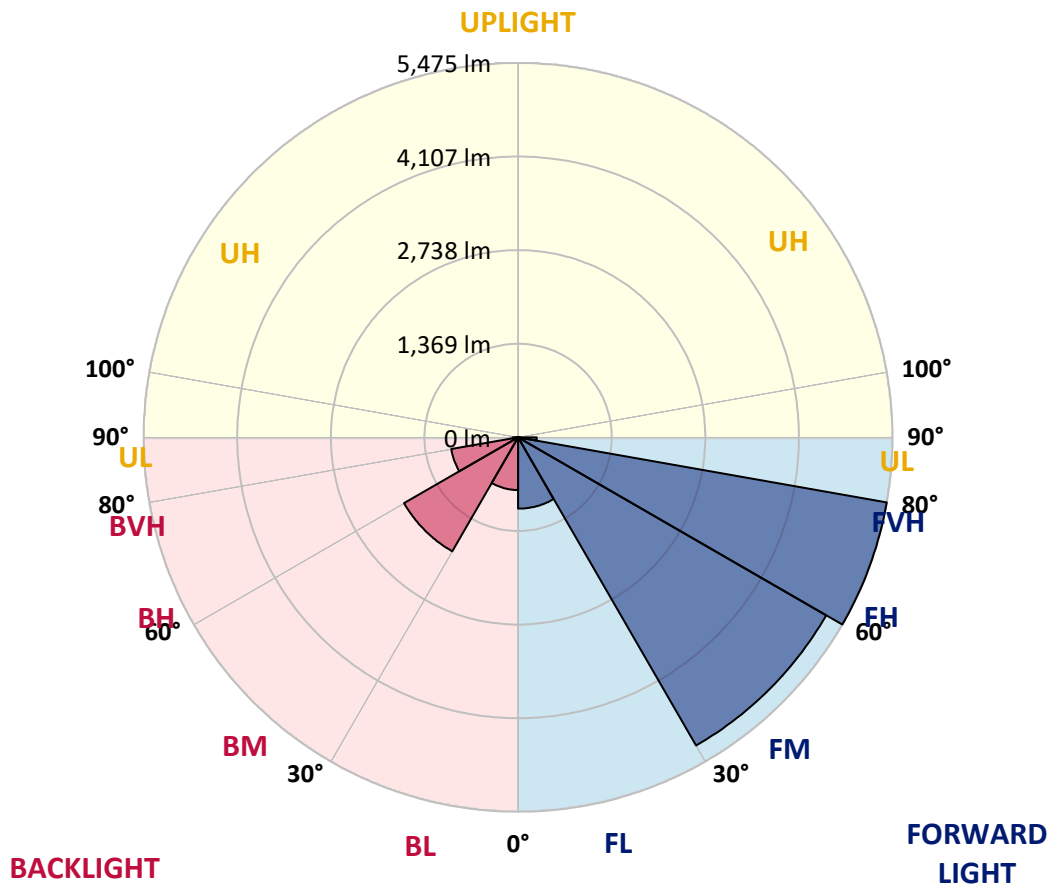
CATALOG NUMBER: GWS-SA6B-830-U-SLL-W

LUMINAIRE CLASSIFICATION SYSTEM LUMEN TABLE AND BUG RATING:

Zone	Lumens	% Fixture	Zone Rating/Lumen Limit		
			B	U	G
FL (0°-30°)	1042.6	6.6			
FM (30°-60°)	5204.1	33.0			
FH (60°-80°)	5475.4	34.7			G3/7500
FVH (80°-90°)	272.5	1.7			G3/500
BL (0°-30°)	770.9	4.9	B2/1000		
BM (30°-60°)	1925.2	12.2	B2/2500		
BH (60°-80°)	992.4	6.3	B2/1000		G2/1000
BVH (80°-90°)	80.5	0.5			G1/100
UL (90°-100°)	0.0	0.0		U0/0	
UH (100°-180°)	0.0	0.0		U0/0	

BUG Rating: B2-U0-G3

Type III Short





REPORT NUMBER: P641947
 CATALOG NUMBER: GWS-SA6B-830-U-SLL-W

CANDELA DISTRIBUTION (FULL):

	0°	2°	5°	15°	25°	35°	45°	55°	65°	75°	85°
0°	1965.4	1965.4	1965.4	1965.4	1965.4	1965.4	1965.4	1965.4	1965.4	1965.4	1965.4
2.5°	2135.4	2127.0	2114.9	2073.9	2048.6	2019.7	1989.5	1954.5	1914.8	1887.0	1859.3
5°	2316.3	2303.0	2274.1	2176.4	2108.9	2035.3	1973.8	1903.9	1835.2	1788.1	1741.1
7.5°	2489.9	2473.0	2428.4	2278.9	2169.2	2063.1	1970.2	1868.9	1766.4	1696.5	1641.0
10°	2663.5	2628.6	2571.9	2376.6	2231.9	2108.9	2002.8	1878.6	1742.3	1647.1	1588.0
12.5°	2796.2	2763.6	2702.1	2465.8	2294.6	2140.2	2020.9	1906.3	1790.6	1689.3	1629.0
15°	2920.4	2878.2	2808.2	2549.0	2346.4	2139.0	1984.7	1884.6	1867.7	1842.4	1764.0
17.5°	3009.6	2971.0	2898.7	2616.5	2375.4	2101.6	1884.6	1825.5	1901.5	1978.7	1903.9
20°	3088.0	3043.3	2969.8	2663.5	2381.4	2018.4	1762.8	1764.0	1883.4	1989.5	1971.4
22.5°	3154.3	3104.8	3039.7	2716.6	2379.0	1902.7	1656.7	1729.1	1848.4	1931.6	1934.0
25°	3236.3	3195.3	3141.0	2795.0	2379.0	1784.5	1579.6	1686.9	1789.4	1859.3	1856.9
27.5°	3336.3	3308.6	3264.0	2914.3	2400.7	1685.7	1536.1	1632.6	1713.4	1773.7	1772.5
30°	3448.5	3423.2	3389.4	3040.9	2438.1	1612.1	1512.0	1565.1	1624.2	1672.4	1672.4
32.5°	3563.0	3553.4	3517.2	3142.2	2409.1	1589.2	1491.5	1497.6	1528.9	1568.7	1565.1
35°	3722.2	3712.5	3666.7	3220.6	2283.7	1556.6	1459.0	1428.8	1432.4	1457.8	1466.2
37.5°	3954.9	3940.4	3872.9	3312.2	2094.4	1474.6	1405.9	1356.5	1345.6	1356.5	1372.2
40°	4235.8	4214.1	4122.5	3436.4	1876.2	1363.7	1322.7	1281.7	1263.6	1267.3	1285.3
42.5°	4587.9	4542.1	4410.7	3567.9	1660.3	1266.1	1229.9	1204.6	1184.1	1181.6	1216.6
45°	5159.5	5034.1	4825.5	3684.8	1478.3	1214.2	1146.7	1128.6	1111.7	1121.4	1162.4
47.5°	6157.8	5926.3	5520.0	3784.9	1367.3	1215.4	1080.4	1061.1	1059.9	1079.2	1125.0
50°	7530.0	7196.0	6569.0	3852.4	1309.5	1229.9	1040.6	1009.2	1032.1	1051.4	1094.8
52.5°	8844.3	8334.2	7587.9	3851.2	1284.1	1232.3	1051.4	961.0	1032.1	1037.0	1078.0
55°	9966.8	9043.2	7862.8	3455.7	1248.0	1222.6	1093.6	923.6	1018.9	1037.0	1069.5
57.5°	10859.1	9494.2	7842.3	2791.3	1357.7	1169.6	1118.9	915.2	980.3	1039.4	1076.7
60°	10760.2	9288.0	7337.1	1713.4	1346.8	1075.5	1115.3	930.8	915.2	1006.8	1068.3
62.5°	10103.1	8548.9	6467.7	1188.9	1264.8	1021.3	1056.2	958.6	854.9	959.8	1027.3
65°	9183.1	7595.1	5389.8	911.6	1047.8	1023.7	956.2	939.3	801.8	885.0	957.4
67.5°	7966.5	6412.3	4255.1	722.3	730.7	886.2	868.1	834.4	752.4	818.7	883.8
70°	5989.0	4679.6	2927.6	581.2	553.4	740.3	780.1	750.0	704.2	723.5	792.2
72.5°	4220.2	3055.4	1603.7	460.6	426.8	569.1	677.6	672.8	622.2	636.6	704.2
75°	3136.2	2161.9	1002.0	364.1	347.3	407.5	567.9	582.4	540.2	557.1	608.9
77.5°	2087.2	1399.9	557.1	270.1	270.1	297.8	423.2	490.7	459.4	472.7	508.8
80°	1151.5	712.6	278.5	177.2	182.1	205.0	308.7	353.3	354.5	387.1	396.7
82.5°	364.1	226.7	124.2	103.7	97.7	117.0	199.0	253.2	236.3	301.4	277.3
85°	83.2	53.1	22.9	22.9	25.3	38.6	76.0	135.0	172.4	207.4	150.7
87.5°	0.0	0.0	0.0	0.0	0.0	0.0	0.0	1.2	53.1	78.4	69.9
90°	0.0	0.0	0.0	0.0	0.0	0.0	0.0	0.0	0.0	0.0	0.0



REPORT NUMBER: P641947
 CATALOG NUMBER: GWS-SA6B-830-U-SLL-W

CANDELA DISTRIBUTION (continued):

	90°	95°	105°	115°	125°	135°	145°	155°	165°	175°	180°
0°	1965.4	1965.4	1965.4	1965.4	1965.4	1965.4	1965.4	1965.4	1965.4	1965.4	1965.4
2.5°	1842.4	1818.3	1811.1	1790.6	1788.1	1768.9	1761.6	1761.6	1770.1	1770.1	1778.5
5°	1721.8	1691.7	1674.8	1650.7	1644.7	1630.2	1620.5	1621.8	1632.6	1639.8	1654.3
7.5°	1615.7	1595.2	1583.2	1572.3	1569.9	1567.5	1556.6	1555.4	1559.1	1569.9	1580.8
10°	1571.1	1556.6	1560.3	1568.7	1582.0	1589.2	1579.6	1574.7	1571.1	1578.3	1588.0
12.5°	1614.5	1600.0	1607.3	1621.8	1639.8	1647.1	1643.5	1642.2	1645.9	1673.6	1694.1
15°	1709.8	1682.0	1672.4	1678.4	1692.9	1700.1	1696.5	1701.3	1724.2	1796.6	1848.4
17.5°	1827.9	1760.4	1721.8	1711.0	1717.0	1723.0	1723.0	1735.1	1774.9	1881.0	1946.1
20°	1891.8	1803.8	1738.7	1712.2	1714.6	1720.6	1720.6	1737.5	1782.1	1895.5	1937.7
22.5°	1875.0	1794.2	1714.6	1685.7	1686.9	1691.7	1691.7	1706.2	1745.9	1846.0	1865.3
25°	1808.6	1737.5	1659.1	1633.8	1636.2	1644.7	1642.2	1650.7	1680.8	1762.8	1773.7
27.5°	1729.1	1666.4	1589.2	1569.9	1580.8	1597.6	1583.2	1584.4	1612.1	1680.8	1682.0
30°	1643.5	1591.6	1522.9	1508.4	1528.9	1537.3	1524.1	1524.1	1551.8	1598.8	1597.6
32.5°	1550.6	1518.1	1468.6	1452.9	1475.9	1489.1	1472.2	1474.6	1496.4	1527.7	1515.6
35°	1463.8	1446.9	1424.0	1413.2	1427.6	1439.7	1428.8	1433.7	1454.2	1462.6	1445.7
37.5°	1380.6	1378.2	1380.6	1380.6	1384.2	1387.8	1380.6	1392.7	1410.7	1399.9	1380.6
40°	1308.3	1317.9	1340.8	1334.8	1331.2	1334.8	1330.0	1350.5	1368.5	1349.2	1326.3
42.5°	1248.0	1266.1	1301.0	1301.0	1293.8	1296.2	1293.8	1319.1	1332.4	1305.8	1280.5
45°	1196.1	1222.6	1267.3	1273.3	1261.2	1261.2	1266.1	1297.4	1302.2	1266.1	1239.5
47.5°	1159.9	1192.5	1243.1	1254.0	1235.9	1234.7	1248.0	1281.7	1281.7	1239.5	1209.4
50°	1134.6	1170.8	1231.1	1245.6	1227.5	1222.6	1244.3	1276.9	1269.7	1219.0	1188.9
52.5°	1117.7	1155.1	1229.9	1250.4	1238.3	1233.5	1255.2	1278.1	1260.0	1205.8	1174.4
55°	1106.9	1147.9	1233.5	1250.4	1237.1	1228.7	1250.4	1270.9	1261.2	1198.5	1168.4
57.5°	1112.9	1153.9	1228.7	1237.1	1221.4	1207.0	1232.3	1261.2	1257.6	1200.9	1170.8
60°	1103.3	1140.7	1202.1	1204.6	1178.0	1155.1	1192.5	1235.9	1235.9	1192.5	1166.0
62.5°	1058.7	1096.0	1150.3	1152.7	1122.6	1097.2	1140.7	1192.5	1191.3	1156.3	1128.6
65°	985.1	1020.1	1081.6	1087.6	1057.5	1030.9	1075.5	1123.8	1127.4	1096.0	1071.9
67.5°	904.3	935.7	981.5	1005.6	980.3	952.6	993.5	1039.4	1038.2	1000.8	975.5
70°	807.9	836.8	879.0	899.5	883.8	857.3	894.7	918.8	907.9	889.9	873.0
72.5°	712.6	740.3	780.1	780.1	763.2	737.9	748.8	792.2	805.5	792.2	781.3
75°	612.5	636.6	664.4	670.4	633.0	587.2	637.8	675.2	690.9	684.9	671.6
77.5°	510.0	528.1	569.1	558.3	488.3	464.2	505.2	560.7	571.5	567.9	549.8
80°	393.1	403.9	447.3	425.6	371.4	355.7	373.8	417.2	419.6	407.5	384.6
82.5°	264.1	278.5	307.5	265.3	264.1	249.6	235.1	239.9	261.7	259.2	243.6
85°	135.0	142.3	170.0	159.2	136.3	118.2	112.1	119.4	107.3	97.7	84.4
87.5°	56.7	61.5	84.4	47.0	14.5	0.0	0.0	7.2	10.9	15.7	16.9
90°	0.0	0.0	0.0	0.0	0.0	0.0	0.0	0.0	0.0	0.0	0.0



REPORT NUMBER: P641947
 CATALOG NUMBER: GWS-SA6B-830-U-SLL-W

CANDELA DISTRIBUTION (continued):

	185°	195°	205°	215°	225°	235°	245°	255°	265°	270°	275°
0°	1965.4	1965.4	1965.4	1965.4	1965.4	1965.4	1965.4	1965.4	1965.4	1965.4	1965.4
2.5°	1797.8	1811.1	1843.6	1884.6	1924.4	1965.4	2010.0	2037.7	2071.5	2114.9	2116.1
5°	1672.4	1702.5	1749.6	1812.3	1877.4	1952.1	2038.9	2111.3	2198.1	2266.8	2294.6
7.5°	1595.2	1638.6	1697.7	1777.3	1862.9	1955.7	2069.1	2190.9	2333.2	2424.8	2479.0
10°	1602.5	1668.8	1727.9	1795.4	1872.6	1972.6	2118.5	2280.1	2454.9	2575.5	2643.0
12.5°	1731.5	1801.4	1790.6	1786.9	1838.8	1960.6	2158.3	2370.5	2584.0	2704.5	2785.3
15°	1894.3	1920.8	1818.3	1741.1	1772.5	1917.2	2180.0	2451.3	2691.3	2838.4	2917.9
17.5°	1977.5	1924.4	1800.2	1684.5	1676.0	1850.8	2190.9	2533.3	2811.8	2958.9	3043.3
20°	1938.9	1861.7	1756.8	1647.1	1586.8	1760.4	2184.8	2598.4	2921.6	3085.5	3154.3
22.5°	1855.7	1788.1	1706.2	1601.3	1514.4	1661.5	2169.2	2663.5	3019.2	3184.4	3244.7
25°	1765.2	1714.6	1647.1	1555.4	1473.4	1574.7	2158.3	2750.3	3131.4	3289.3	3327.9
27.5°	1674.8	1637.4	1582.0	1510.8	1463.8	1514.4	2161.9	2863.7	3276.1	3425.6	3409.9
30°	1585.6	1553.0	1514.4	1483.1	1462.6	1500.0	2152.3	2984.3	3435.2	3573.9	3481.0
32.5°	1501.2	1471.0	1446.9	1451.7	1463.8	1506.0	2102.9	3094.0	3581.1	3699.3	3558.2
35°	1428.8	1397.5	1397.5	1414.4	1459.0	1485.5	1975.0	3179.6	3742.7	3860.9	3667.9
37.5°	1361.3	1333.6	1351.7	1379.4	1421.6	1430.0	1811.1	3262.8	3977.8	4088.7	3837.9
40°	1302.2	1274.5	1307.0	1342.0	1363.7	1360.1	1644.7	3378.5	4255.1	4369.7	4063.4
42.5°	1255.2	1229.9	1258.8	1303.4	1307.0	1310.7	1522.9	3489.5	4577.1	4723.0	4451.7
45°	1216.6	1198.5	1213.0	1257.6	1257.6	1313.1	1446.9	3582.3	5061.8	5319.8	5164.3
47.5°	1186.5	1175.6	1182.9	1197.3	1221.4	1356.5	1398.7	3653.5	5944.4	6450.8	6294.1
50°	1169.6	1158.7	1168.4	1138.2	1210.6	1378.2	1383.0	3707.7	7108.0	7901.4	7707.2
52.5°	1155.1	1151.5	1157.5	1087.6	1234.7	1363.7	1371.0	3635.4	7888.1	9329.0	9520.7
55°	1150.3	1152.7	1123.8	1050.2	1263.6	1315.5	1334.8	3118.1	8100.3	10560.1	11750.2
57.5°	1152.7	1145.5	1071.9	1053.8	1264.8	1219.0	1386.6	2224.6	7791.6	11095.4	13931.4
60°	1144.3	1108.1	1009.2	1086.4	1209.4	1105.7	1349.2	1450.5	6977.8	10684.3	14058.0
62.5°	1106.9	1053.8	955.0	1104.5	1110.5	1038.2	1225.1	1117.7	5892.6	9804.1	12837.8
65°	1052.6	981.5	909.1	1067.1	1010.4	1006.8	921.2	895.9	4738.7	8756.3	11680.2
67.5°	963.4	892.3	875.4	981.5	909.1	892.3	740.3	742.8	3781.3	7639.7	10516.7
70°	862.1	791.0	804.2	887.4	809.1	741.5	599.3	618.6	2868.5	6365.2	8948.0
72.5°	795.8	700.5	701.8	781.3	711.4	600.5	493.2	510.0	1820.7	4797.7	7114.0
75°	671.6	617.4	590.8	633.0	604.1	467.8	414.8	411.2	1079.2	3438.8	5327.1
77.5°	560.7	518.5	505.2	522.1	451.0	346.1	334.0	328.0	611.3	2202.9	3490.7
80°	406.3	395.5	394.3	402.7	347.3	254.4	254.4	255.6	329.2	1196.1	1967.8
82.5°	258.0	282.1	249.6	277.3	236.3	180.9	168.8	191.7	189.3	510.0	829.6
85°	107.3	147.1	137.5	145.9	112.1	98.9	106.1	114.5	109.7	196.5	323.1
87.5°	20.5	24.1	26.5	25.3	25.3	31.3	35.0	42.2	42.2	56.7	97.7
90°	0.0	0.0	0.0	0.0	0.0	0.0	0.0	0.0	0.0	0.0	0.0



REPORT NUMBER: P641947

CATALOG NUMBER: GWS-SA6B-830-U-SLL-W

CANDELA DISTRIBUTION (continued):

	285°	295°	305°	315°	325°	335°	345°	355°	358°	360°
0°	1965.4	1965.4	1965.4	1965.4	1965.4	1965.4	1965.4	1965.4	1965.4	1965.4
2.5°	2161.9	2196.9	2189.7	2205.3	2184.8	2192.1	2151.1	2140.2	2133.0	2135.4
5°	2383.8	2454.9	2468.2	2494.7	2476.6	2476.6	2404.3	2350.0	2330.7	2316.3
7.5°	2609.3	2711.8	2779.3	2786.5	2776.9	2757.6	2652.7	2555.0	2520.0	2489.9
10°	2809.4	2932.4	3008.4	3044.6	3026.5	2996.3	2866.1	2732.3	2690.1	2663.5
12.5°	2962.6	3071.1	3121.7	3145.8	3143.4	3132.6	3026.5	2881.8	2837.2	2796.2
15°	3061.4	3115.7	3096.4	3095.2	3112.1	3155.5	3122.9	3009.6	2957.7	2920.4
17.5°	3125.3	3073.5	2987.9	2948.1	2984.3	3086.8	3161.5	3097.6	3050.6	3009.6
20°	3148.2	2963.8	2839.6	2766.0	2808.2	2956.5	3141.0	3161.5	3121.7	3088.0
22.5°	3121.7	2829.9	2661.1	2574.3	2615.3	2792.5	3080.7	3213.4	3186.8	3154.3
25°	3056.6	2690.1	2487.5	2409.1	2453.7	2634.6	2973.4	3261.6	3262.8	3236.3
27.5°	2975.8	2561.0	2365.7	2292.2	2335.6	2504.4	2868.5	3303.8	3346.0	3336.3
30°	2893.8	2483.9	2307.8	2256.0	2288.5	2438.1	2761.2	3347.2	3431.6	3448.5
32.5°	2856.5	2521.3	2444.1	2467.0	2424.8	2476.6	2722.6	3408.7	3535.3	3563.0
35°	2905.9	2852.8	3048.2	3138.6	2989.1	2792.5	2772.1	3501.5	3681.2	3722.2
37.5°	3145.8	3563.0	3854.8	4173.1	3913.9	3481.0	3016.8	3659.5	3889.8	3954.9
40°	3667.9	4182.8	4709.7	5120.9	4729.0	4146.6	3482.2	3894.6	4176.8	4235.8
42.5°	4159.9	4764.0	5489.8	6021.6	5512.8	4690.4	3983.8	4290.1	4555.4	4587.9
45°	4642.2	5334.3	6434.0	7173.1	6482.2	5207.7	4496.3	4958.1	5158.3	5159.5
47.5°	5207.7	5977.0	7618.0	8670.6	7768.7	5780.4	4977.4	6015.6	6294.1	6157.8
50°	5884.1	6616.0	8837.0	10413.0	9337.4	6484.6	5588.7	7304.5	7684.3	7530.0
52.5°	6789.7	7320.2	10180.3	12111.9	11047.2	7286.4	6475.0	9007.1	9132.5	8844.3
55°	8064.1	8336.6	11904.5	14209.9	12955.9	8273.9	7771.1	11143.7	10792.8	9966.8
57.5°	10966.4	9945.1	14118.3	16603.4	15115.5	10068.1	10611.9	13499.7	12251.8	10859.1
60°	13394.8	11898.5	16166.9	18978.7	16966.3	12045.6	13279.1	13909.7	12197.5	10760.2
62.5°	12576.1	12396.5	16906.0	19240.4	17598.1	13018.6	12783.5	12876.3	11401.7	10103.1
65°	11033.9	11435.5	16246.5	17999.6	16897.6	12146.9	11563.3	11921.4	10491.3	9183.1
67.5°	10123.6	10419.0	15073.2	16013.7	15624.3	11204.0	10614.3	10355.1	9078.2	7966.5
70°	9192.7	9437.5	13426.2	13521.4	13638.4	9636.5	8679.1	7907.4	6766.7	5989.0
72.5°	7943.6	7956.8	11343.8	10791.6	11013.4	7540.8	6986.2	5911.9	4925.5	4220.2
75°	6664.3	6300.1	8979.3	7543.3	7988.2	5866.0	5800.9	4455.3	3715.0	3136.2
77.5°	5081.1	4655.5	6559.4	4960.5	5610.4	3906.7	4361.2	3021.6	2614.1	2087.2
80°	3411.1	3145.8	3624.5	2799.8	3670.3	2692.5	2844.4	1712.2	1484.3	1151.5
82.5°	1799.0	1536.1	2240.3	1660.3	2213.8	1479.5	1067.1	529.3	451.0	364.1
85°	696.9	806.7	1098.5	590.8	858.5	528.1	308.7	131.4	109.7	83.2
87.5°	135.0	208.6	114.5	0.0	0.0	0.0	0.0	0.0	0.0	0.0
90°	0.0	0.0	0.0	0.0	0.0	0.0	0.0	0.0	0.0	0.0

Cooper Lighting Solutions Photometric Lab
1121 Highway 74 South
Peachtree City, GA 30269



LM-79-2019: Approved Method: Electrical and Photometric Measurements of Solid-State Lighting Products

Report Prepared for

Cooper Lighting Solutions

MCGRAW EDISON

Report Number: SP1-2408-195-9

Test Date: 08/07/2024

Luminaire Tested: GALN-SB1A-830-U-5WQ

Data in this report applies to families of products including GALN-SB1A-830-U-5WQ.

Test Information

Test Method: LM-79-2019
 Report Number: SP1-2408-195-9
 Test Lab: COOPER LIGHTING SOLUTIONS
 Photometer: SP1 - 76IN SPHERE
 Measurement Geometry: 4π
 Issue Date: 08/07/2024
 Manufacturer: COOPER LIGHTING SOLUTIONS
 Product Line: MCGRAW EDISON
 Catalog Number: **GALN-SB1A-830-U-5WQ**
 Description: GALLEON AREA AND ROADWAY LUMINAIRE. (1) 80 CRI, 3000K, 350MA HIGH DENSITY LIGHTSQUARE WITH 26 LEDS AND TYPE V WIDE OPTICS

Spectral Parameters

CCT (K): 3050
 CIE u': 0.2476
 CIE v': 0.5251
 Duv: 0.0034
 CIE x: 0.4383
 CIE y: 0.4131
 CIE z: 0.1487
 Peak Wavelength (nm): 603
 Dominant Wavelength (nm): 581
 Purity: 55.55201
 Rf: 81.5
 Rg: 99.2

CRI (Ra):	81.0		
R1:	79.6	R9:	7.1
R2:	85.6	R10:	67.0
R3:	92.0	R11:	82.7
R4:	82.6	R12:	63.2
R5:	78.9	R13:	80.3
R6:	81.7	R14:	95.0
R7:	85.2	R15:	71.7
R8:	62.0		



Test Conditions

Stabilization Time: 20M
 Operation Time: 1H 20M
 Sphere Temperature (°C): 24.2

REPORT NUMBER: SP1-2408-195-9

Measurement and Test Equipment			
Instrument	Identification Number	Calibration Date	Calibration Due Date
Photometer	IN0058	6/18/2024	12/18/2024
Power Meter	INXT2011004	2/8/2024	2/8/2025
AC Power Source	IN0063	10/24/2023	10/24/2024
DC Power Source	IN0208	10/24/2023	10/24/2024
Sphere Thermometer	IN0085	10/24/2023	10/24/2024
Room Thermometer	IN0046	10/24/2023	10/24/2024

REPORT NUMBER: SP1-2408-195-9

CIE 1931 Chromaticity Diagram



CIE 1931 Chromaticity Diagram with 2017 ANSI 7-Step and 4-Step Quadrangles



Point lies inside the ANSI 3000K 4-step quadrangle

REPORT NUMBER: SP1-2408-195-9

Photopic Flux vs. Wavelength



Photopic Lumens: NR

λ (nm)	Power W [^] /nm	Lumens (φ/nm)	λ (nm)	Power W [^] /nm	Lumens (φ/nm)	λ (nm)	Power W [^] /nm	Lumens (φ/nm)	λ (nm)	Power W [^] /nm	Lumens (φ/nm)	λ (nm)	Power W [^] /nm	Lumens (φ/nm)
360	0	NR	490	168	NR	620	940	NR	750	35	NR	880	1	NR
365	0	NR	495	233	NR	625	897	NR	755	30	NR	885	1	NR
370	0	NR	500	300	NR	630	847	NR	760	26	NR	890	1	NR
375	0	NR	505	372	NR	635	790	NR	765	22	NR	895	1	NR
380	0	NR	510	430	NR	640	730	NR	770	19	NR	900	1	NR
385	0	NR	515	483	NR	645	668	NR	775	16	NR	905	1	NR
390	0	NR	520	524	NR	650	605	NR	780	14	NR	910	0	NR
395	2	NR	525	555	NR	655	545	NR	785	12	NR	915	0	NR
400	4	NR	530	581	NR	660	485	NR	790	10	NR	920	0	NR
405	7	NR	535	604	NR	665	430	NR	795	9	NR	925	0	NR
410	17	NR	540	623	NR	670	378	NR	800	8	NR	930	0	NR
415	34	NR	545	645	NR	675	331	NR	805	7	NR	935	0	NR
420	68	NR	550	667	NR	680	290	NR	810	6	NR	940	0	NR
425	128	NR	555	693	NR	685	251	NR	815	5	NR	945	0	NR
430	214	NR	560	719	NR	690	218	NR	820	4	NR	950	0	NR
435	339	NR	565	754	NR	695	188	NR	825	4	NR	955	0	NR
440	507	NR	570	791	NR	700	162	NR	830	3	NR	960	0	NR
445	573	NR	575	830	NR	705	139	NR	835	3	NR	965	0	NR
450	356	NR	580	873	NR	710	119	NR	840	3	NR	970	0	NR
455	217	NR	585	913	NR	715	102	NR	845	2	NR	975	0	NR
460	168	NR	590	948	NR	720	88	NR	850	2	NR	980	0	NR
465	113	NR	595	974	NR	725	76	NR	855	2	NR	985	0	NR
470	85	NR	600	994	NR	730	65	NR	860	1	NR	990	0	NR
475	85	NR	605	998	NR	735	55	NR	865	1	NR	995	0	NR
480	94	NR	610	994	NR	740	47	NR	870	1	NR	1000	0	NR
485	120	NR	615	973	NR	745	41	NR	875	1	NR			

REPORT NUMBER: SP1-2408-195-9

Scotopic Flux vs. Wavelength



Scotopic Lumens: NR

S/P: 1.27

λ (nm)	Power W [^] /nm	Lumens (ϕ /nm)	λ (nm)	Power W [^] /nm	Lumens (ϕ /nm)	λ (nm)	Power W [^] /nm	Lumens (ϕ /nm)	λ (nm)	Power W [^] /nm	Lumens (ϕ /nm)	λ (nm)	Power W [^] /nm	Lumens (ϕ /nm)
360	0	NR	490	168	NR	620	940	NR	750	35	NR	880	1	NR
365	0	NR	495	233	NR	625	897	NR	755	30	NR	885	1	NR
370	0	NR	500	300	NR	630	847	NR	760	26	NR	890	1	NR
375	0	NR	505	372	NR	635	790	NR	765	22	NR	895	1	NR
380	0	NR	510	430	NR	640	730	NR	770	19	NR	900	1	NR
385	0	NR	515	483	NR	645	668	NR	775	16	NR	905	1	NR
390	0	NR	520	524	NR	650	605	NR	780	14	NR	910	0	NR
395	2	NR	525	555	NR	655	545	NR	785	12	NR	915	0	NR
400	4	NR	530	581	NR	660	485	NR	790	10	NR	920	0	NR
405	7	NR	535	604	NR	665	430	NR	795	9	NR	925	0	NR
410	17	NR	540	623	NR	670	378	NR	800	8	NR	930	0	NR
415	34	NR	545	645	NR	675	331	NR	805	7	NR	935	0	NR
420	68	NR	550	667	NR	680	290	NR	810	6	NR	940	0	NR
425	128	NR	555	693	NR	685	251	NR	815	5	NR	945	0	NR
430	214	NR	560	719	NR	690	218	NR	820	4	NR	950	0	NR
435	339	NR	565	754	NR	695	188	NR	825	4	NR	955	0	NR
440	507	NR	570	791	NR	700	162	NR	830	3	NR	960	0	NR
445	573	NR	575	830	NR	705	139	NR	835	3	NR	965	0	NR
450	356	NR	580	873	NR	710	119	NR	840	3	NR	970	0	NR
455	217	NR	585	913	NR	715	102	NR	845	2	NR	975	0	NR
460	168	NR	590	948	NR	720	88	NR	850	2	NR	980	0	NR
465	113	NR	595	974	NR	725	76	NR	855	2	NR	985	0	NR
470	85	NR	600	994	NR	730	65	NR	860	1	NR	990	0	NR
475	85	NR	605	998	NR	735	55	NR	865	1	NR	995	0	NR
480	94	NR	610	994	NR	740	47	NR	870	1	NR	1000	0	NR
485	120	NR	615	973	NR	745	41	NR	875	1	NR			

REPORT NUMBER: SP1-2408-195-9

Melanopic Flux vs. Wavelength



Melanopic Lumens: NR

M/P: 2.32

λ (nm)	Power W [^] /nm	Lumens (ϕ /nm)	λ (nm)	Power W [^] /nm	Lumens (ϕ /nm)	λ (nm)	Power W [^] /nm	Lumens (ϕ /nm)	λ (nm)	Power W [^] /nm	Lumens (ϕ /nm)	λ (nm)	Power W [^] /nm	Lumens (ϕ /nm)
360	0	NR	490	168	NR	620	940	NR	750	35	NR	880	1	NR
365	0	NR	495	233	NR	625	897	NR	755	30	NR	885	1	NR
370	0	NR	500	300	NR	630	847	NR	760	26	NR	890	1	NR
375	0	NR	505	372	NR	635	790	NR	765	22	NR	895	1	NR
380	0	NR	510	430	NR	640	730	NR	770	19	NR	900	1	NR
385	0	NR	515	483	NR	645	668	NR	775	16	NR	905	1	NR
390	0	NR	520	524	NR	650	605	NR	780	14	NR	910	0	NR
395	2	NR	525	555	NR	655	545	NR	785	12	NR	915	0	NR
400	4	NR	530	581	NR	660	485	NR	790	10	NR	920	0	NR
405	7	NR	535	604	NR	665	430	NR	795	9	NR	925	0	NR
410	17	NR	540	623	NR	670	378	NR	800	8	NR	930	0	NR
415	34	NR	545	645	NR	675	331	NR	805	7	NR	935	0	NR
420	68	NR	550	667	NR	680	290	NR	810	6	NR	940	0	NR
425	128	NR	555	693	NR	685	251	NR	815	5	NR	945	0	NR
430	214	NR	560	719	NR	690	218	NR	820	4	NR	950	0	NR
435	339	NR	565	754	NR	695	188	NR	825	4	NR	955	0	NR
440	507	NR	570	791	NR	700	162	NR	830	3	NR	960	0	NR
445	573	NR	575	830	NR	705	139	NR	835	3	NR	965	0	NR
450	356	NR	580	873	NR	710	119	NR	840	3	NR	970	0	NR
455	217	NR	585	913	NR	715	102	NR	845	2	NR	975	0	NR
460	168	NR	590	948	NR	720	88	NR	850	2	NR	980	0	NR
465	113	NR	595	974	NR	725	76	NR	855	2	NR	985	0	NR
470	85	NR	600	994	NR	730	65	NR	860	1	NR	990	0	NR
475	85	NR	605	998	NR	735	55	NR	865	1	NR	995	0	NR
480	94	NR	610	994	NR	740	47	NR	870	1	NR	1000	0	NR
485	120	NR	615	973	NR	745	41	NR	875	1	NR			

Summary

$R_f = 81.5$
 $R_g = 99.2$
 $CIE R_a = 81.0$
 $R_9 = 7.1$



Color Vector Graphics

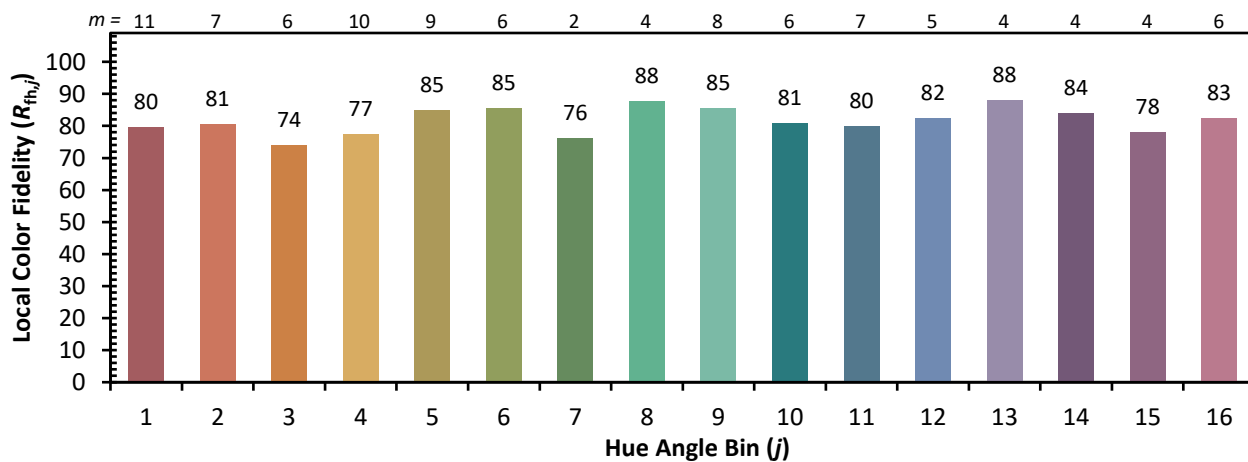
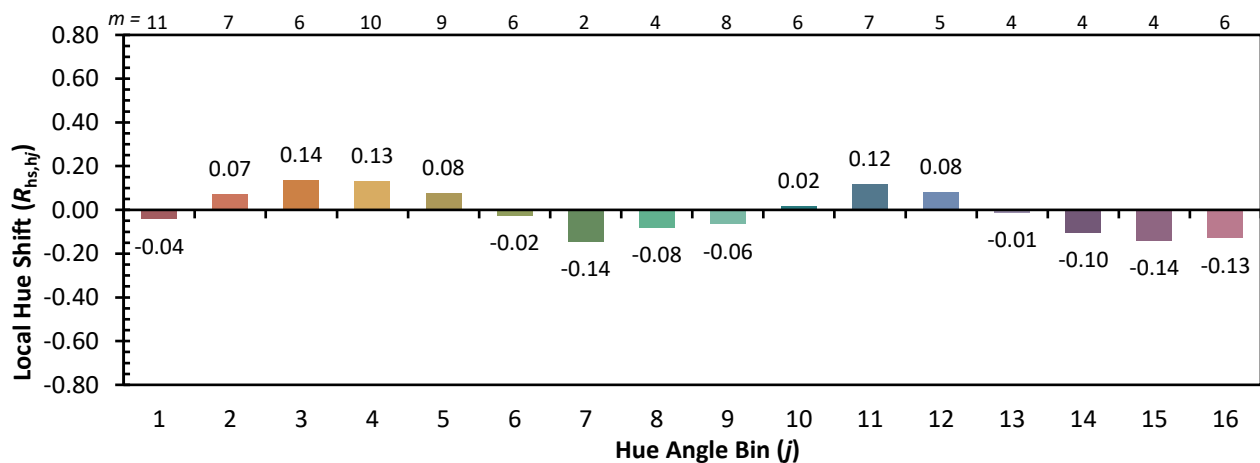
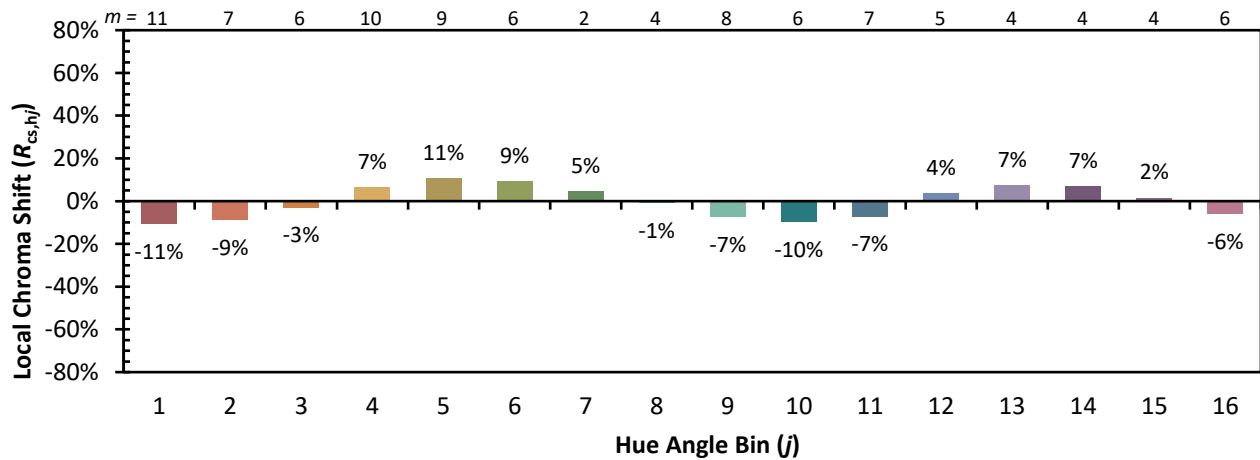


Individual Sample Fidelity Index ($R_{f,i}$)

CES01 = 86	CES26 = 74	CES51 = 89	CES76 = 70
CES02 = 63	CES27 = 88	CES52 = 92	CES77 = 86
CES03 = 31	CES28 = 89	CES53 = 81	CES78 = 72
CES04 = 70	CES29 = 67	CES54 = 87	CES79 = 90
CES05 = 50	CES30 = 68	CES55 = 85	CES80 = 88
CES06 = 51	CES31 = 71	CES56 = 78	CES81 = 78
CES07 = 42	CES32 = 70	CES57 = 76	CES82 = 95
CES08 = 41	CES33 = 71	CES58 = 78	CES83 = 90
CES09 = 29	CES34 = 82	CES59 = 92	CES84 = 94
CES10 = 76	CES35 = 90	CES60 = 95	CES85 = 86
CES11 = 59	CES36 = 93	CES61 = 93	CES86 = 72
CES12 = 65	CES37 = 87	CES62 = 83	CES87 = 85
CES13 = 43	CES38 = 75	CES63 = 77	CES88 = 83
CES14 = 74	CES39 = 94	CES64 = 83	CES89 = 75
CES15 = 71	CES40 = 89	CES65 = 77	CES90 = 81
CES16 = 47	CES41 = 85	CES66 = 80	CES91 = 96
CES17 = 50	CES42 = 86	CES67 = 79	CES92 = 73
CES18 = 56	CES43 = 81	CES68 = 84	CES93 = 84
CES19 = 72	CES44 = 99	CES69 = 91	CES94 = 64
CES20 = 66	CES45 = 87	CES70 = 78	CES95 = 80
CES21 = 87	CES46 = 82	CES71 = 76	CES96 = 84
CES22 = 79	CES47 = 77	CES72 = 92	CES97 = 87
CES23 = 92	CES48 = 71	CES73 = 71	CES98 = 81
CES24 = 91	CES49 = 81	CES74 = 93	CES99 = 74
CES25 = 72	CES50 = 89	CES75 = 74	



Color Rendition by Hue-Angle Bin



Measure Comparisons



(END OF REPORT)